

Aritco 4000 Home Lift Settle Station Water Tower NORTH YORKSHIRE

Client

Homeowners Mark and Pat Rand took on the ambitious restoration and conversion of Settle Water Tower in Yorkshire. Built in 1876, it served the steam trains that travelled along the Settle to Carlisle line. Now the only remaining tower on the line, it is a listed building and of such historical and architectural interest that the project was recently featured on Channel 4's Restoration Man.

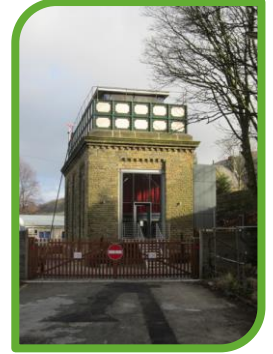
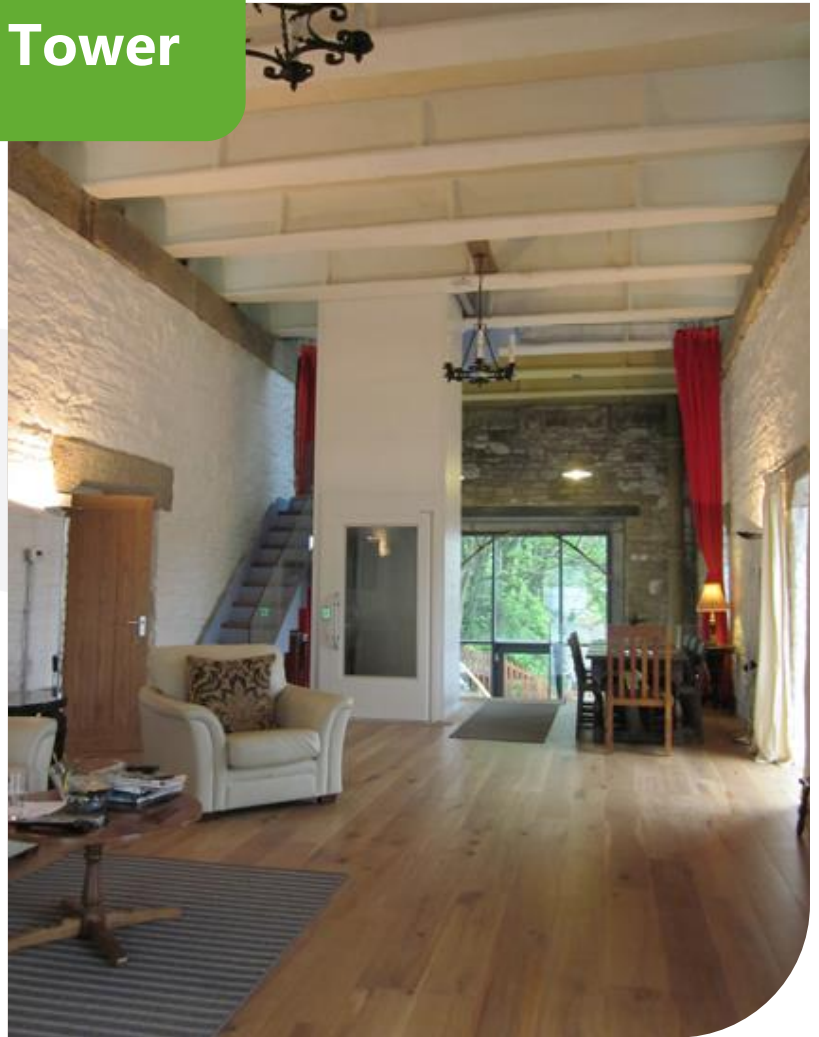
Problem

Whilst there were no planning or pressing personal requirements to install a lift, Mr & Mrs Rand felt strongly that it should be an integral part of the conversion because it gave them confidence that Settle Water Tower would meet their needs both now and in the future. However, finding a solution was quite a dilemma: planning regulations disallowed the provision of an external lift and available internal space was insufficient for a conventional lift to be installed.

Solution

After talking to a number of potential suppliers, Evo Lifts were selected, who not only offered the perfect product in terms of size specifications but also proved to be the most competitive on price.

Evo Lifts supplied and installed an [Aritco 4000 Home Lift](#). Designed exclusively for domestic use, this lift has a smaller footprint to take up less space than a conventional commercial lift but is engineered to the same high precision standards with fast, quiet travel and all emergency features. It is also remarkably flexible in its configuration to enable customisation with travel up to 13 metres, entrance and exit options on three sides and a range of aesthetic finishes available.



Testimonial

On completion, Mr Rand said: "I found Evo Lifts exceedingly helpful to deal with. I would recommend them anytime. Balancing budget and aesthetics were really important in this project and to our delight we were able to do so well. It is the ultimate example of old meeting new happily."